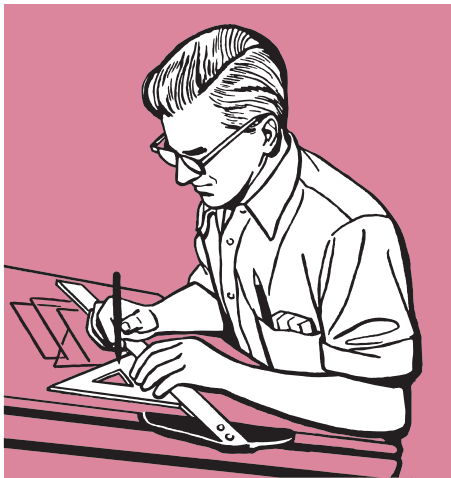


CONCEPT Computer-Aided Design (CAD) and Computer-Aided Modeling or Manufacturing (CAM) are both tools used to streamline the process of designing and creating prototypes for manufacturing. CAD is a software that creates a database to store the electronic files - original designs and updated versions. CAM software is used to control the tools that bring the designs to life.

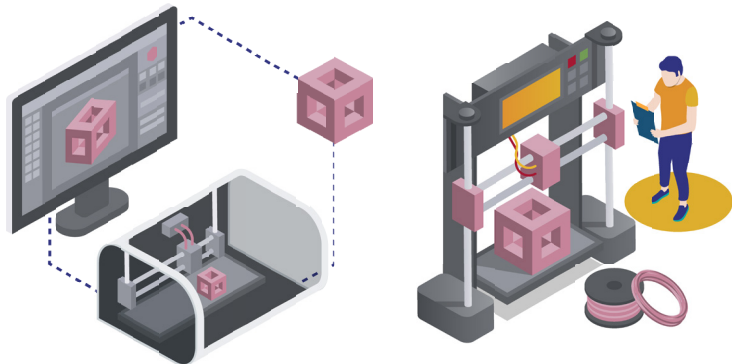


BACKGROUND

Before the 1960s, before CAD and CAM, people called drafters drew by hand all sides, parts, measurements, and functions of designs. These designs were called technical drawings. The technical drawings were then given to the engineers to develop using tools.

REAL WORLD CONNECTIONS

Manufacturing has become very automated now that computers are helping with the creation of designs and controlling the machines that generate the products. Once the product's design and print process is approved, all that's left to do is load and unload the manufacturing machine.



EXAMPLES

CAD/CAM technology is heavily used in the dental industry for fabricating dental crowns, bridges, partials and dentures.

