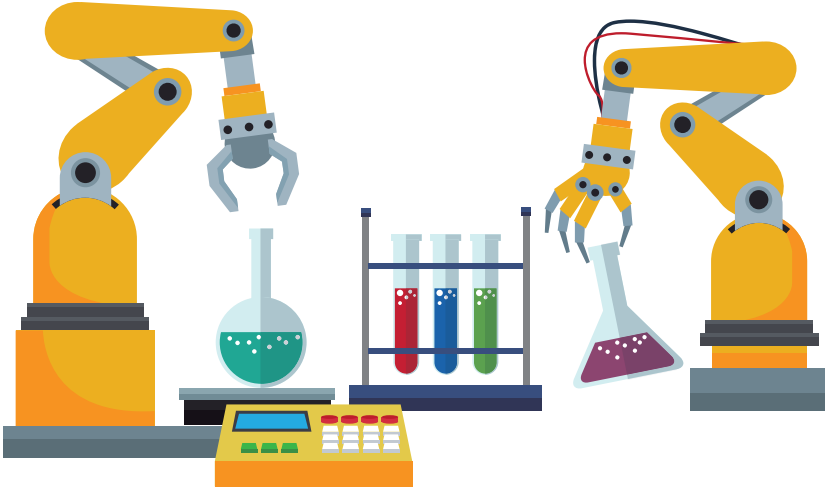


**CONCEPT** Robots can be equipped to do almost any task these days. With all the different options of grippers, robots can operate power tools, spray paint and spot weld.

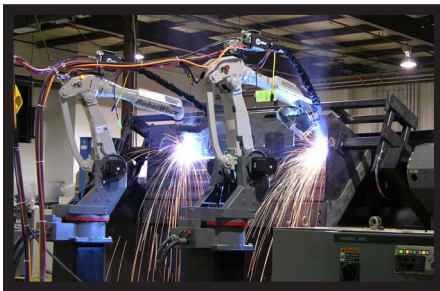


## BACKGROUND

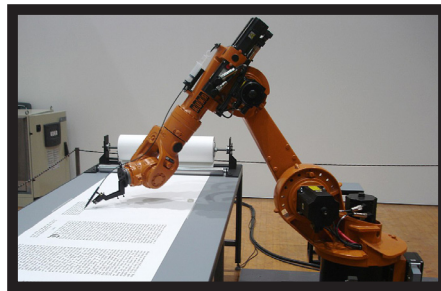
The first automated welding robot was first used in the early 1970s. By 1973 a 6-axis industrial robot arm was introduced, which later became the industry standard. By the late 1970s, robots were doing very precise jobs such as arc welding.

## REAL WORLD CONNECTIONS

Lifting heavy objects has caused serious injuries for workers ever since the start of manufacturing plants. Robots prevent people from performing dangerous tasks in the manufacturing industry. This allows employees the support they need around large objects, molten metal and other worker's safety concerns.



Arc welding as part of a Motoman ArcWorld 6200 system



Kuka robot writing a book in calligraphy



Industrial Welding Robot