

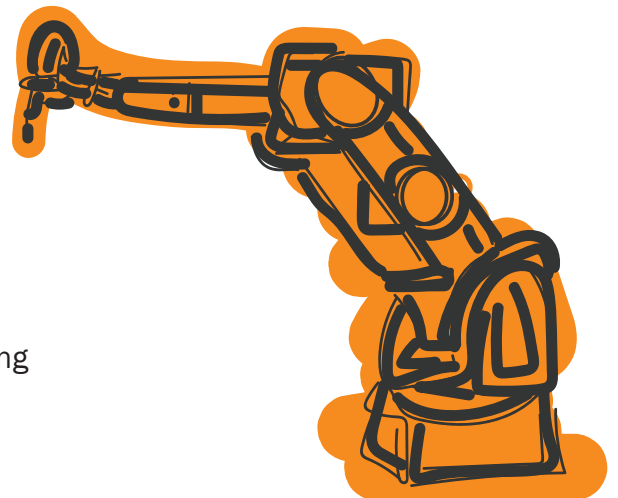
CONCEPT Sourcing robotics components can be challenging due to several reasons. Robotics components often require specific technical specifications that may not be readily available in the market. This can make it difficult to find the right components that meet the requirements of a particular robot design.

The rapid pace of technological advancement in robotics means that components quickly become obsolete, and new ones are constantly being introduced. This can make it difficult to keep up with the latest technology and find the most advanced components for a particular application.

BACKGROUND

The challenges of sourcing components has persisted since the field of robotics was born. Limited supply, specialized expertise, and cost remain major obstacles for robotics researchers and manufacturers. Additionally, the rapid pace of technological advancement in robotics has made it increasingly challenging to keep up with the latest components and integrate them into existing systems.

In recent years, the emergence of new technologies such as artificial intelligence and machine learning has led to increased demand for specialized robotics components, further exacerbating the challenges of sourcing these components. Despite these difficulties, the robotics industry continues to grow and evolve, and researchers and manufacturers are constantly seeking innovative solutions to overcome these sourcing challenges.



Make sure it measures up

EXAMPLES

TECHNICAL SPECIFICATIONS: Sourcing components with the right technical specifications can be challenging due to the variety and complexity of requirements.

LIMITED SUPPLY: This can cause delays in sourcing components and result in higher prices due to the limited availability.

TECHNOLOGICAL OBSOLESCENCE: This can make it challenging to keep up with the latest technology and find the most advanced components for a particular application.

COST: The cost of sourcing components may impact project budgets and timelines.



REAL WORLD CONNECTIONS

Universities systems can be an excellent resource for sourcing robotics components, providing access to technical expertise, industry partnerships, and research facilities. They have engineering programs that specialize in robotics research, which can provide access to the latest technology and expertise in sourcing components. Additionally, universities often have partnerships with industry suppliers and manufacturers, which can provide access to a wider range of components and reduce lead times. Some universities may also offer courses or workshops focused on robotics component sourcing and integration, providing students and local businesses with the technical expertise needed to overcome sourcing challenges.



powered by:

**Nebraska Public Power District***Always there when you need us*